

R Multiplex Filters and Strainers From Rosedale Products

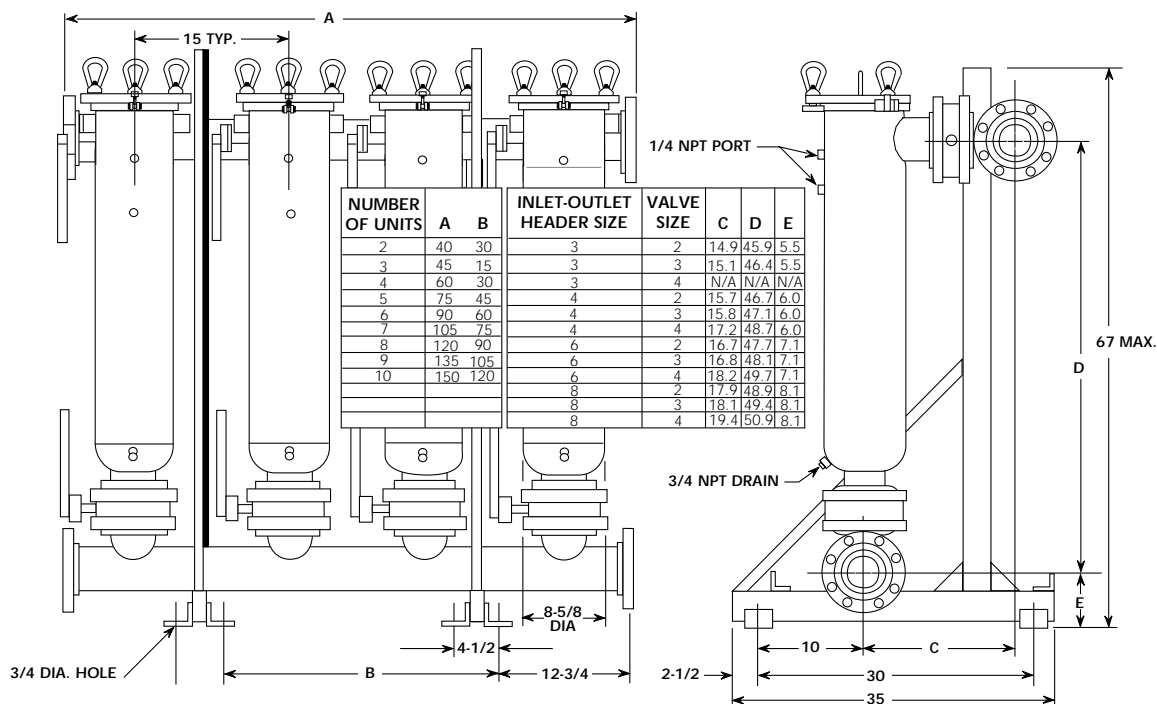
These high-capacity filters and strainers require no flow interruption for servicing

- For use with filter bags for filtering to as fine as one micron, or with perforated strainer baskets
- From 2 to 10 Model 8 housings are mounted in parallel to inlet and outlet manifolds
- Each unit has inlet and outlet valves, gage ports, and a drain port, to permit servicing one at a time
- These are completely packaged free-standing systems in carbon steel and stainless steel

See page 12 for more details on the Model 8 housings used.



Dimensions (IN)



How To Order

Build an ordering code as shown in the example

Example: **M8-30-10-8F-4-150-C-B-S-M-200-D-C-2M-50**

| | | | |
|--|---------|---------|--|
| | Housing | Options | OPTIONAL INNER BASKET |
| MODEL NO. | | | |
| Multiplex = M8-30 | | | |
| NUMBER OF HOUSINGS | | | |
| 2, 3, 4, 5, 6, 7, 8, 9, 10 | | | |
| PIPE SIZE (FLANGED) | | | |
| 3-in. = 3F | | | |
| 4-in. = 4F | | | |
| 6-in. = 6F | | | |
| 8-in. = 8F | | | |
| VALVE TYPE & SIZE (INCH) | | | |
| Butterfly type = 2, 3, 4 | | | |
| PRESSURE RATING | | | |
| 150 psi = 150 | | | |
| HOUSING MATERIAL | | | |
| Carbon steel = C | | | |
| 304 stainless steel = S | | | |
| 316 stainless steel = S316 | | | |
| COVER SEAL | | | |
| Buna N = B | | | |
| Ethylene Propylene = E | | | |
| Viton® = V | | | |
| Teflon® Encapsulated Viton® = TEV | | | |
| Teflon® (solid white) = TSW | | | |
| BASKET SEAL | | | |
| Seal required = S | | | |
| | | | INNER BASKET, MEDIA SIZE |
| | | | Perforation diameters (for type 2P baskets) 1/4, 3/16, 9/64, 3/32, 1/16 |
| | | | Mesh sizes (for type 2M and 2BM baskets) 20, 30, 40, 50, 60, 70, 80, 100, 150, 200 |
| | | | INNER BASKET, TYPE |
| | | | No sym. = No inner basket |
| | | | 2P = Perforated strainer |
| | | | 2B = Filter bag* |
| | | | 2M = Mesh-lined strainer |
| | | | 2BM = Mesh-lined filter bag |
| | | | ASME CODE STAMP |
| | | | C = Code |
| | | | DISPLACER |
| | | | D = Displacer |
| | | | OUTER BASKET, MEDIA SIZE |
| | | | Perforation diameters (for type P baskets) 1/4, 3/16, 9/64, 3/32, 1/16 |
| | | | Mesh sizes (for type M and BM baskets) 20, 30, 40, 50, 60, 70, 80, 100, 150, 200 |
| | | | OUTER BASKET, TYPE |
| | | | PB = Perforated strainer |
| | | | B = Filter bag* |
| | | | M = Mesh-lined strainer |
| | | | BM = Mesh-lined filter bag |

- Flanges provided with the housing match the pressure rating of the vessel. Housings rated 150 psi have 150 class flanges. ANSI B16.5 Pressure-Temperature rating tables determine flange class for ASME housings.
- Higher pressure ratings available. Consult factory.
- Filter bags are ordered separately. See page 120-130.